

30 805 875



- 500mm projection
- pivoting spout
- laminar flow
- cold water only
- max. flow 5.7 l/min at 3 bar flow pressure
- two valves
- min. recess depth 125 mm
- max. recess depth 80 mm
- lead-free
- This product can help a building meet the requirements of Green Building Rating Systems, e.g. LEED®, BREEAM®, DGNB

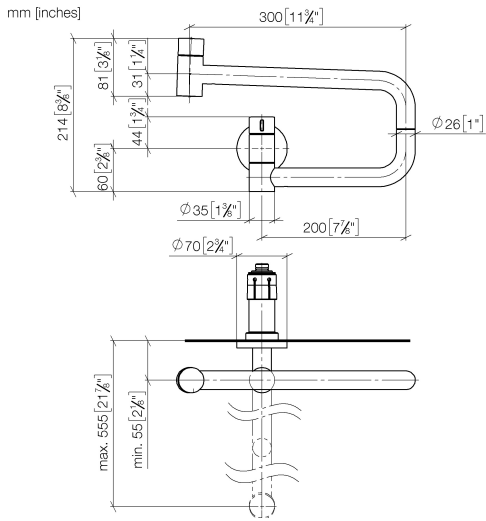
|   |                               |               |
|---|-------------------------------|---------------|
|    | Brushed Dark Platinum         | 30 805 875-99 |
|    | Chrome                        | 30 805 875-00 |
|    | Brushed Platinum              | 30 805 875-06 |
|    | Platinum                      | 30 805 875-08 |
|    | Durabress (23kt Gold)         | 30 805 875-09 |
|    | Dark Chrome                   | 30 805 875-19 |
|    | Brushed Durabress (23kt Gold) | 30 805 875-28 |
|    | Brushed Champagne (22kt Gold) | 30 805 875-46 |
|   | Champagne (22kt Gold)         | 30 805 875-47 |
|  | Brushed Chrome                | 30 805 875-93 |

Required miscellaneous

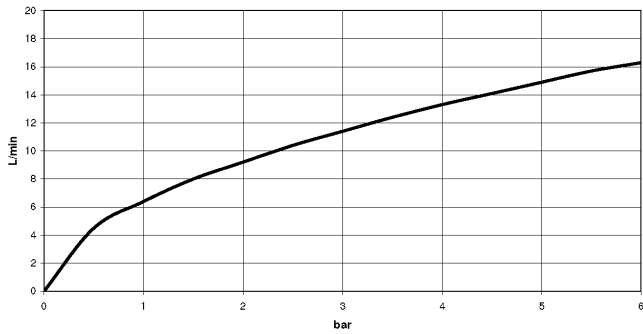


- POT FILLER Concealed wall elbow** 35 087 970-90  
- 0010
- max. recess depth 125 mm
  - min. recess depth 80 mm

30 805 875



Flow rate chart



Codes & Standards

ASME  
A112.18.1/CSA  
B125.1

California Energy  
Commission  
(CEC)

NSF/ANSI 372

NSF/ANSI/CAN  
61



TARA ULTRA POT FILLER Cold-water valve - Brushed Dark Platinum

TARA ULTRA

30 805 875

Certificates

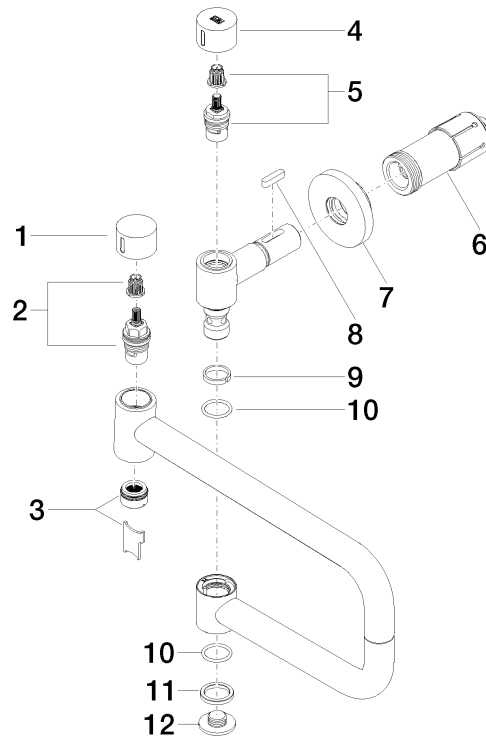
LGA\_29748.

IAPMO\_N-4976.

IAPMO\_4976 (4).

IAPMO\_6397.

30 805 875



## Spare parts list

| No. | Item Number        | Name       | Quantity used | Delivery time |
|-----|--------------------|------------|---------------|---------------|
| 1   | 09 20 62 025-99    | handle     | 1             | 30            |
| 2   | 90 90 03 146 00 90 | top        | 1             | 2             |
| 3   | 90 23 01 026 11-99 | aerator    | 1             | 30            |
| 4   | 09 20 62 027-99    | handle     | 1             | 30            |
| 5   | 90 90 03 171 00 90 | top        | 1             | 2             |
| 6   | 90 30 01 213 00 90 | connection | 1             | 2             |
| 7   | 90 27 87 039 00-99 | rosette    | 1             | 30            |
| 8   | 90 16 04 001 00 90 | spring     | 1             | 2             |
| 9   | 09 28 10 136 90    | ring       | 1             | 2             |
| 10  | 09 14 10 015 90    | seal       | 2             | 2             |
| 11  | 09 28 10 139 90    | ring       | 1             | 2             |
| 12  | 09 21 02 028-99    | lid        | 1             | 30            |